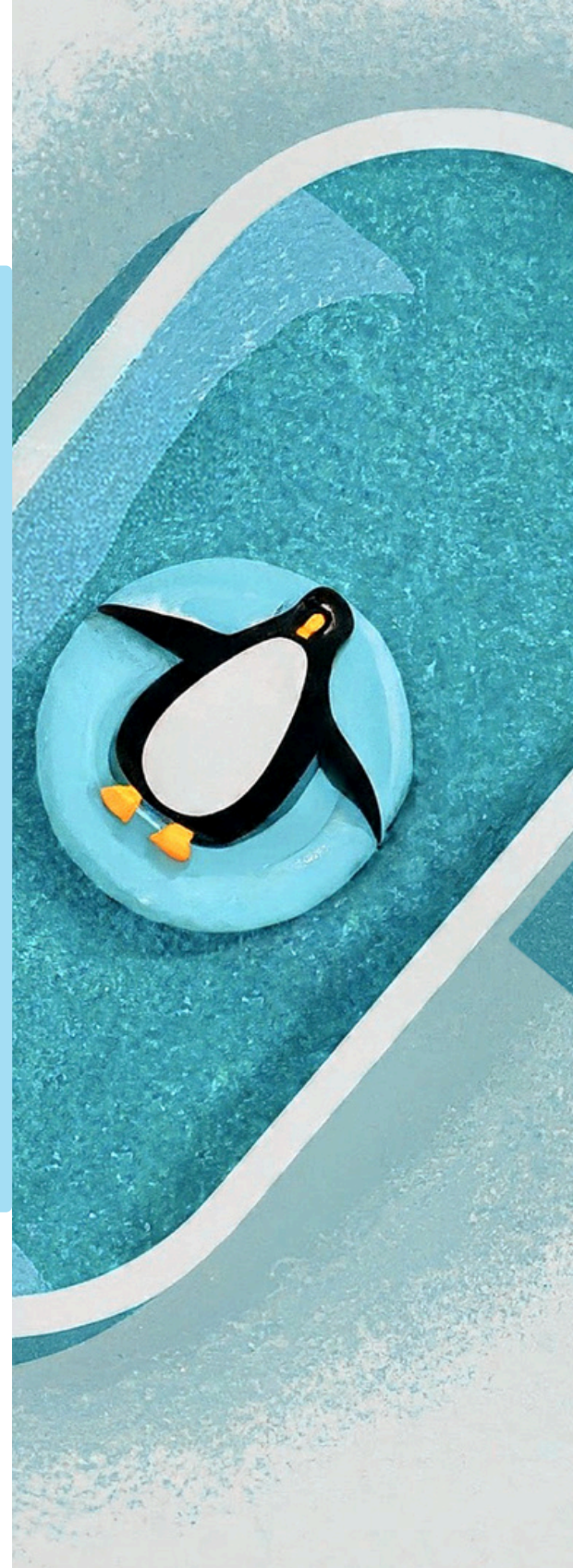




**PENGUIN
CHILLERS**
WE. KNOW. COLD.

COLD THERAPY CHILLER

INSTALL / FILTER KIT
SETUP



Visit Us At:
www.penguinchillers.com

Issued:
June 26, 2024



What's Included

Here is what you should receive in your Install / Filter Accessory Kit:

- Two (2) female camlocks A
- One (1) in-line strainer B
- One (1) standalone filter C
- Two (2) 1/2" bulkheads D
- Two (2) 3/4" FPT x 3/4" barbs E
- Six (6) hose clamps F
- One (1) in-line strainer filter wrench G
- One (1) filter wrench H
- Two (2) 6' pieces of 3/4" tubing (not pictured)
- One (1) 3-D printed filter (inside standalone filter)





Supply Line Connection

Stock Tank Supply Line:

Drill a 1" hole through the side of your stock tank near the bottom of the tank. (Orange)



Obtain a 1/2" bulkhead fitting (Part D). Remove the bulkhead nut and one (1) rubber gasket/washer from the 1/2" bulkhead. (Pictured Below)



From the inside of the tank, put the bulkhead fitting with one (1) remaining rubber gasket/washer through the newly drilled hole, pushing the tailpiece (threaded) of the bulkhead through the hole.

From the outside of the tank, slide the rubber gasket/washer we removed earlier back on to the tailpiece. Screw on the bulkhead nut and tighten it down to secure in place.

After the bulkhead is installed and the nut is secured in position, apply 2-3 layers of tape around the outside/tailpiece (threaded) of the bulkhead fitting. Then hand screw on the female threaded barbed adapter (Part E).



Return Line Connection

Return Line:

Drill a 1" Hole through the side of your stock tank roughly around the water line. (Blue, See Previous Page For Photo)

Obtain a 1/2" bulkhead fitting (Part D). Remove the bulkhead nut and one (1) rubber gasket/washer from the 1/2" bulkhead. (Pictured Below)



From the inside of the tank, put the bulkhead fitting with one (1) remaining rubber gasket/washer through the newly drilled hole, pushing the tailpiece (threaded) of the bulkhead through the hole.

From the outside of the tank, slide the rubber gasket/washer we removed earlier back on to the tailpiece. Screw on the bulkhead nut and tighten it down to secure in place.

After the bulkhead is installed and the nut is secured in position, apply 2-3 layers of tape around the outside/tailpiece (threaded) of the bulkhead fitting. Then hand screw on the female threaded barbed adapter (Part E).



How To Setup Tubing Lines

Chiller Inlet Tubing Line:

You'll want the tubing that's feeding the chiller to be as short as possible / as close to the tub as possible to help gravity feed the pump.

Select one of the pieces of tubing you received. Cut 6" off of this tubing line. *(These are not pre-cut at our facility due to individual setups having different space constraints.)*

Insert the barbed end of one (1) female camlock (Part A) into your 6" tubing line. Secure this with an adjustable hose clamp (Part F).

Attach the in-line strainer (Part B) to the other end of your 6" tubing line. Ensure that the arrow is pointing towards the female camlock we installed. Make sure the clear part of the filter is facing the ground. Secure this with an adjustable hose clamp (Part F). (Pictured Below)

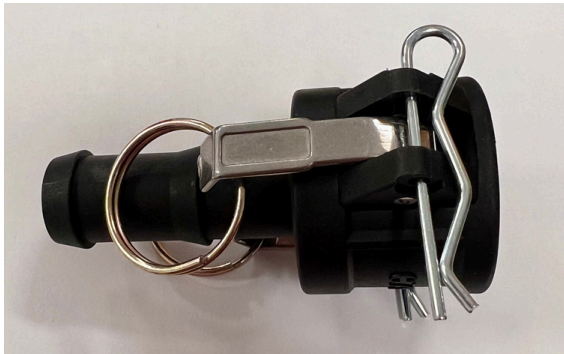


Connect the completed tubing line to the "Inlet" of the chiller using the female camlock. Be sure that the arrow on the in-line strainer (Part B) is pointing towards the "Inlet" of the chiller.

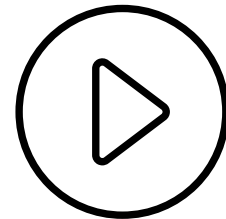


How To Setup Tubing Lines

After you secure the camlock fitting in place, remove the metal pin from the metal ring and put it through the hole on the camlock fitting to ensure you have a secure connection. (Pictured Below)



Click Play Button
For Video



Connect a piece of tubing to the in-line strainer (Part B). Secure this with an adjustable hose clamp (Part F). This will connect to the barbed fitting (Part E) in your tub drain. Cut this tubing line to your desired length. Secure this connection with an adjustable hose clamp (Part F).

The tubing should now go from the bottom port of the tub, to the in-line strainer (Part B), to the "Inlet" of the chiller via the female camlock fitting (Part A).

Chiller Outlet Tubing Line:

Pickup a piece of unused tubing. Insert the barbed end of one (1) female camlock (Part A) into this tubing line. Secure this with an adjustable hose clamp (Part F).

Connect your new tubing line to the "Outlet" of the chiller via the camlock. Secure the camlock using the metal pins as we did earlier.

Measure the distance from the "Outlet" of your chiller to your standalone filter, and cut the tubing to your desired length. Connect this to the barbed fitting on the "In" side of your filter. Secure this with an adjustable hose clamp (Part F).

Continued On Next Page



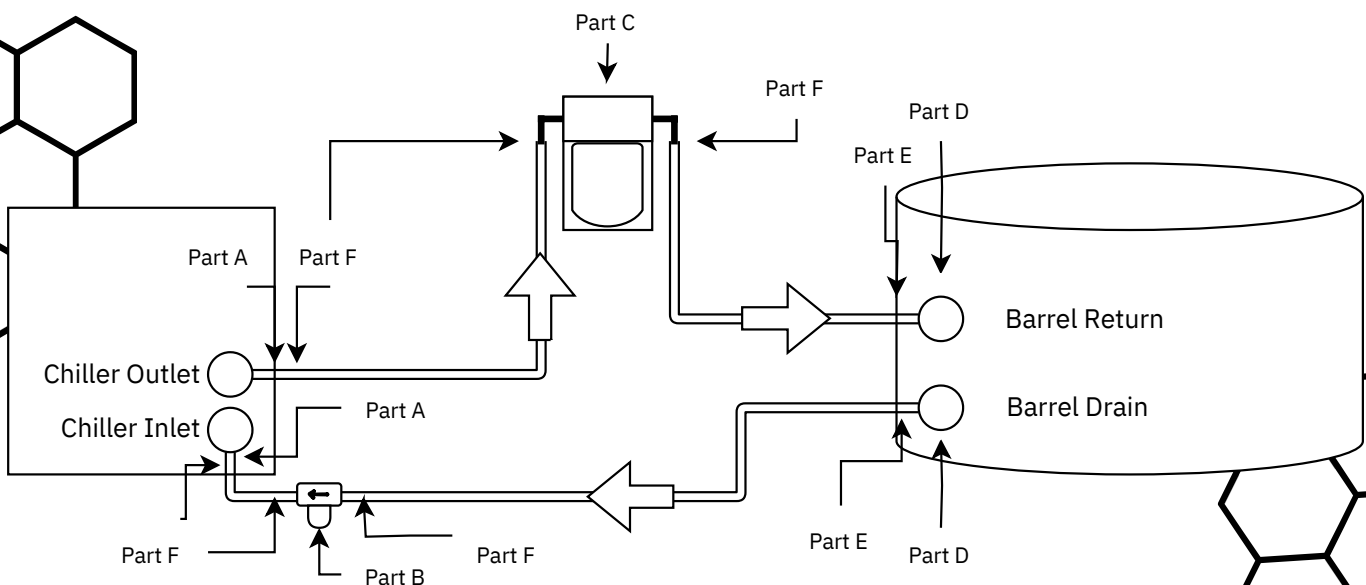
How To Setup Tubing Lines

From the "OUT" side of the filter, take a piece of tubing and connect it to the return (top bulkhead/elbow fitting on the stock tank).

The hose clamps you received will go around the in-line filter, and the connections on the blue filter canister.

Summary of Tubing Setup:

- Tubing goes from the bottom of the stock tank to the in-line filter. From the in-line strainer, it goes to the "Inlet" of the chiller.
- Water flows through the chiller, out the "Outlet".
- From the "Outlet", tubing goes to the "IN" side of the filter.
- Water flows through the filter
- From the "OUT" of the filter, tubing goes to the top of the stock tank.





Additional Information

Please take note of your flow rate when you first hook up the system. If you notice your flow rate slowing, this means it's time to clean your filter(s).

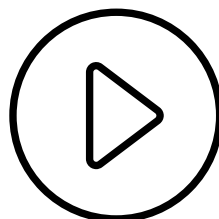
The filters are reusable and they **need to be cleaned weekly**. To clean them, simply unscrew the housing using the filter wrench and slide the filter out. You can use liquid dish soap to clean the filters. You may use cold or room temperature water, but you should never use hot water at or above 80°F. Do not use dishwashers or other machines to clean your filters. Once the filter has been cleaned, return the filter and screw the housing back on.

To properly insert the larger filter, gently set the filter inside the blue canister (concave side up). Slide the canister (containing the filter) under the black cap. Carefully lift the filter and push it into the bottom of the black filter cap. You can then lift and screw the blue filter canister back on.

The chiller is rainproof and can be used outdoors **above ambient freezing temperatures only**. (32°F / 0°C). If the chiller is located outdoors, and you live in an area where it gets to freezing ambient temperatures or below, the chiller will need to be drained and stored for the season. (To drain the chiller, you can use a shop-vac to pull out any residual moisture, or simply tip / hold it upside down with the inlet/outlet ports facing the ground.)

If your chiller is left outdoors below freezing ambient temperatures without being drained and damage occurs, Penguin Chillers is not liable for the damage. It can be returned to our facility for repair, but will not be covered under warranty.

Click Play Button
For Video





Additional Information

Please note your setup needs to gravity prime to the pump; the pump is not capable of self priming/suction. Place the chiller within 3' of the drain of your tub, the bottom of the chiller should be at the same or lower height compared to the bottom of your tub. Do not elevate the chiller above the tub. An overly long tubing run from the tub drain to the chiller inlet may cause the pump to fail to move enough water.

A common question we receive is whether or not it is okay to use a timer with the chiller/pump. We **do not recommend that you use a timer** in your setup. You'll want to keep the water cold at all times for a few different reasons:

- Cold water keeps bacteria (slimy walls) largely under control by slowing or stopping their growth. This significantly reduces the amount of maintenance needed to keep your water clean for longer periods of time. This means less frequent water changes and much lower levels of sanitizer being needed for an effective dose (chlorine/hydrogen peroxide/etc.).
- If you are using it on a regular basis the amount of potential power savings will be fairly insignificant, the heat it would gain in the "off" period still needs to be removed when you turn it back on. So if running normally costs \$18-\$28/month you might be able to save \$3-\$5/month. However, you'll have to change water more often so it is unlikely to be a net cost savings.
- When you cut power to the chiller you also cut power to the pump. Pumps get the most wear and tear during startup, that's when a pump is most likely to fail as well. Cycling the power to the chiller is just adding unnecessary wear and tear to the pump.



All chillers come with a 1 year warranty. Certain chillers are offered with an optional extended warranty for an additional charge. The length of warranty will be determined by your purchase, minimum of 1 year.

Penguin Chillers warrants the Chiller to be free from defects in materials and workmanship. The warranty term begins on the date of purchase. This limited warranty does not cover any damage, deterioration or malfunction resulting from any alteration, modification, improper or unreasonable use or maintenance, misuse, abuse, accident, neglect, exposure to excess moisture, fire, improper packing and shipping (such claims must be presented to the carrier), lightning, power surges, or other acts of nature. Penguin Chillers' warranty liability extends only to the replacement cost of the product. Penguin Chillers will not be liable for any consequential, indirect, or incidental damages of any kind, including lost revenues, lost profits, or other losses in connection with the product. Some states do not allow limitation on how long an implied warranty lasts or the exclusion of incidental or consequential damages, so the above limitations or exclusions may not apply to you. Penguin Chillers will, at our discretion, repair or replace the Chiller covered under this warranty. To request warranty service, please contact our technical support via email: support@penguinchillers.com.

If this product is returned to Penguin Chillers for repair the customer is responsible for shipping charges to get the chiller to Penguin Chillers. The chiller needs to be properly packaged for safe transport. This product must be insured during shipment. Customer assumes all risks of loss or damage during shipment. After receiving the package Penguin Chillers will repair or replace the chiller at our discretion. Penguin Chillers will repackage and ship the chiller back to you at no additional cost within the continental 48 states, surcharges may apply outside of the continental 48 states. Penguin Chillers will not be responsible for any costs related to the removal or re-installation of this product from or into any installation. Penguin Chillers will not be responsible for any costs related to any setting up this product, any adjustment of user controls or any installation cost of this product.

TO THE MAXIMUM EXTENT PERMITTED BY LAW, THIS LIMITED WARRANTY AND THE REMEDIES SET FORTH ABOVE ARE EXCLUSIVE AND IN LIEU OF OTHER WARRANTIES, REMEDIES AND CONDITIONS, WHETHER ORAL OR WRITTEN, EXPRESS OR IMPLIED. TO THE MAXIMUM EXTENT PERMITTED BY LAW, PENGUIN CHILLERS SPECIFICALLY DISCLAIMS ANY AND ALL IMPLIED WARRANTIES, INCLUDING, WITHOUT LIMITATION, WARRANTIES OF MERCHANTABILITY AND FITNESS FOR A PARTICULAR PURPOSE. IF PENGUIN CHILLERS CANNOT LAWFULLY DISCLAIM OR EXCLUDE IMPLIED WARRANTIES UNDER APPLICABLE LAW, THEN ALL IMPLIED WARRANTIES COVERING THIS PRODUCT, INCLUDING WARRANTIES OF MERCHANTABILITY AND FITNESS FOR A PARTICULAR PURPOSE, SHALL APPLY TO PRODUCT AS PROVIDED UNDER APPLICABLE LAW.

This limited warranty is void if (i) the label bearing the serial number of this product has been removed or defaced, (ii) the product is not distributed by Penguin Chillers or (iii) this product is not purchased from an authorized Penguin Chillers reseller. If you are unsure whether a reseller is an authorized or not, contact us.



Resources

A Controller Guide was included with your chiller. Please see the FAQ Page on our website to view a copy of the controller guide and other helpful information.



Our Contact Information



+1 865-214-6509



support@penguinchillers.com



www.penguinchillers.com